



GEOCAM MINING CAMEROON S.A

Forge your way

The Tcholliré and Bénoué permits

Located in Northern Cameroon



Our Team



TAKOUGANG WAFFO Alain

- Holds a Master's Degree in Law from Cameroon's Dschang University, Alain has more than 17 years of experience in logistics and mining projects
- Alain is a shareholder of few mining companies. He is also a founding director of GEOCAM MINING CAMEROON S.A.
- He is currently finalizing an MBA on Strategic Management.



AMIN Jamal

- Jamal is a consulting exploration geologist and has been working in the mineral exploration industry in Canada for a decade. He is currently a Director and Vice President of Exploration for Kingsview Minerals Ltd.; as well as a consultant in geology and corporate development for several publicly listed Canadian companies, including BTU Metals Corp., Graycliff Exploration Ltd., and Huntington Exploration Inc.
- Holds a Master's Degree in geological sciences from the University of Buffalo and a Bachelor's Degree from the University of Waterloo.



CHAZI Anas

- Possess experience within the Canadian construction and mining industries. Most recently with ArcelorMittal in the biggest mine in Canada.
- Anas holds a Bachelor's of Mining Engineering from McGill University and is currently completing an MBA from the London School of Business.



Our Team



ABOU'OU ANGO Thierry

- Thierry has been involved for over 10 years in the exploration industry. His experience spans the implementation of geological work, geological interpretation, the identification of structural elements and the understanding of geological, structural and regolith mapping.
- Thierry is currently completing a PhD in Geosciences (Petrology and Structural Geology) at the University of Yaoundé I.



Message from our Technical Advisor

“I have served as a technical advisor to GeoCam Mining Cameroon S.A. and have developed an intimate knowledge of the geological potential of the project areas.

I believe that both the Tcholliré and the Bénoué projects have the potential to host significant gold deposits and that they merit private investment for early-stage geological work.

The geological framework for the region at a large scale is best viewed in the context of a Neoproterozoic shear zone which cuts through both Brazil and Cameroon (in Proterozoic times these land masses were attached, before plate tectonic forces ripped them apart). The Central African Shear Zone is part of this primary Neoproterozoic structure and the Tchollire-Banyo Shear zone splays off of it. Splays off of main shear zones are excellent targets for gold exploration.

Models of gold mineralization in such orogenic settings are well understood, and the comparable Brasilia belt hosts the 9.6 M oz Paracutu Gold Mine. The favourable orogenic geological setting for gold mineralization is confirmed by the artisanal gold mining which is ongoing on the tenements. This can be readily verified through freely available satellite imagery. However, these properties have seen no modern exploration and there are no exploration results which would comply with Canadian NI43-101 technical standards.”



Source: Letter of Support from Mr. Jamal Amin,
dated 11th of March 2022.



Road Map

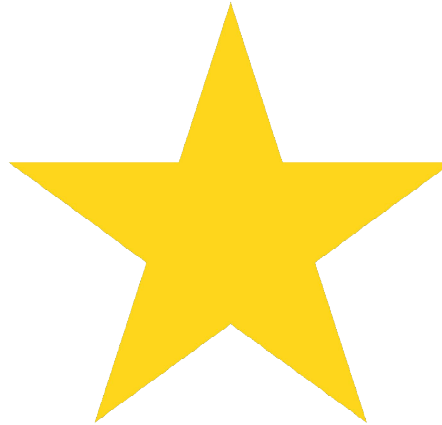
**3. LOCATION AND
ACCESS**

**2. GEOLOGY AND
MINERALIZATION**

**4. SOCIAL AND
ENVIRONMENTAL**

1. HISTORY

5. CONCLUSION



Cameroon at a glance

Significant Upside Potential Exist within the mining industry in Cameroon



Figure 1: Map of Africa depicting the location of Cameroon.



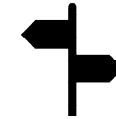
VERY FEW OPERATING MINES IN CAMEROUN



MAJORITY OF MINING IS ARTISANAL



SIGNIFICANT UNTAPPED AND UNDEREXPLORED NEAR SURFACE MINERAL RESOURCES



GOVERNMENT HIGHLY INTERESTED IN DIVERSIFYING ITS ECONOMY AWAY FROM OIL AND GAS

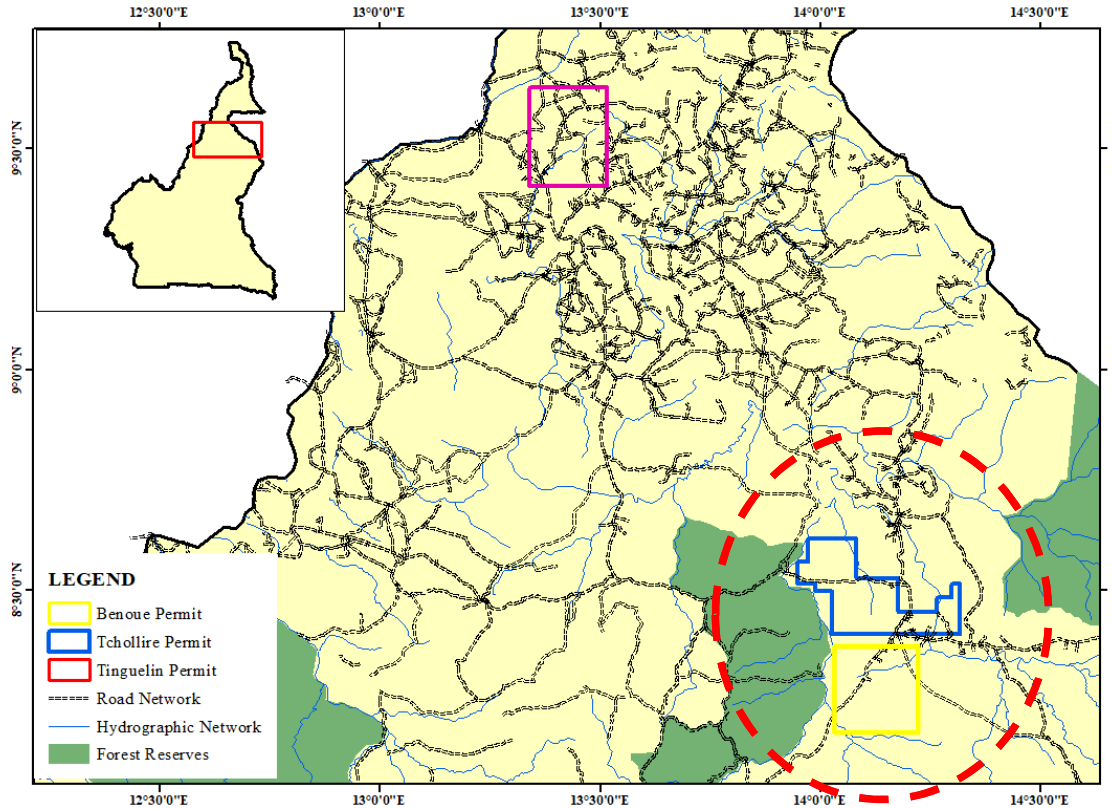


REVISED AND MORE ATTRACTIVE MINING CODE (2016) VERY FAVORABLE TO INTERNATIONAL INVESTORS



SECOND LARGEST WATER POTENTIAL IN AFRICA

The Tcholliré and Benoué Concessions



- ➔ SURFACE AREAS:
 - TCHOLLIRÉ: 496 km²
 - BÉNOUÉ : 431 km²
- ➔ NO HISTORICAL DRILLING
- ➔ PREVIOUS HIGH RESOLUTION GEOPHYSIC STUDIES INCLUDE:
 - AIRBORNE MAGNETIC SURVEY
 - GAMMA-RAY SPECTROMETRIC SURVEY
- ➔ STREAM SAMPLES ARE CURRENTLY BEING ANALYZED IN SOUTH AFRICA
- ➔ MORE GEOPHYSIC STUDIES WERE CONDUCTED BY THE PRECASEM (CAPACITY BUILDING PROJECT IN THE MINING SECTOR). DATA ARE NOT YET AVAILABLE

Figure 2: Map of northern Cameroon depicting the location of the Tcholliré and Benoué Permits

The Tcholliré and Benoué Concessions

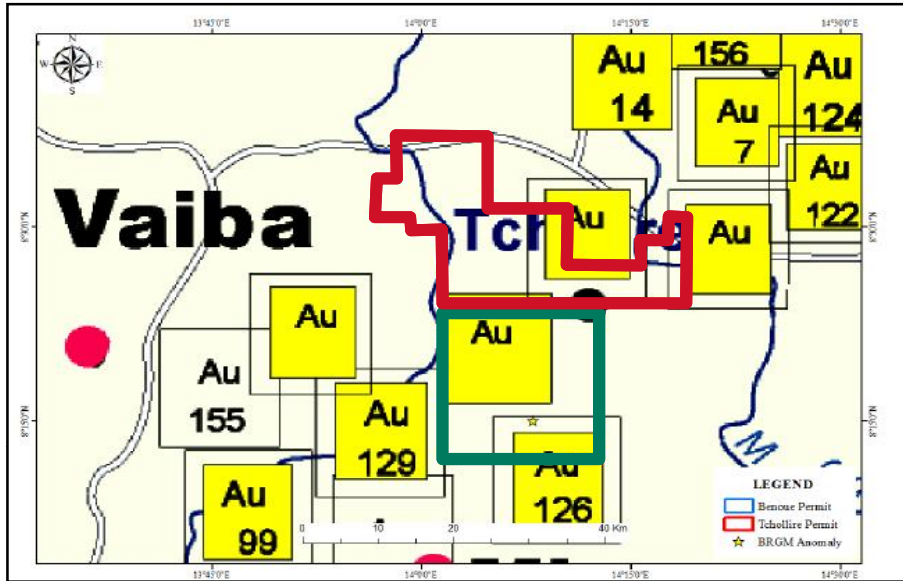





Figure 4: Artisanal Mining Map of northern Cameroon depicting the location of the Tcholliré and Benoué Permits

-  ARTISANAL MINERS ARE CURRENTLY OPERATING ON THE TWO CONCESSIONS
-  ARTISANAL MINERS FOLLOW A NORTH-EAST/SOUTH-WEST AXIS
-  ARTISANAL MINERS HOLES CAN BE ANALYZED

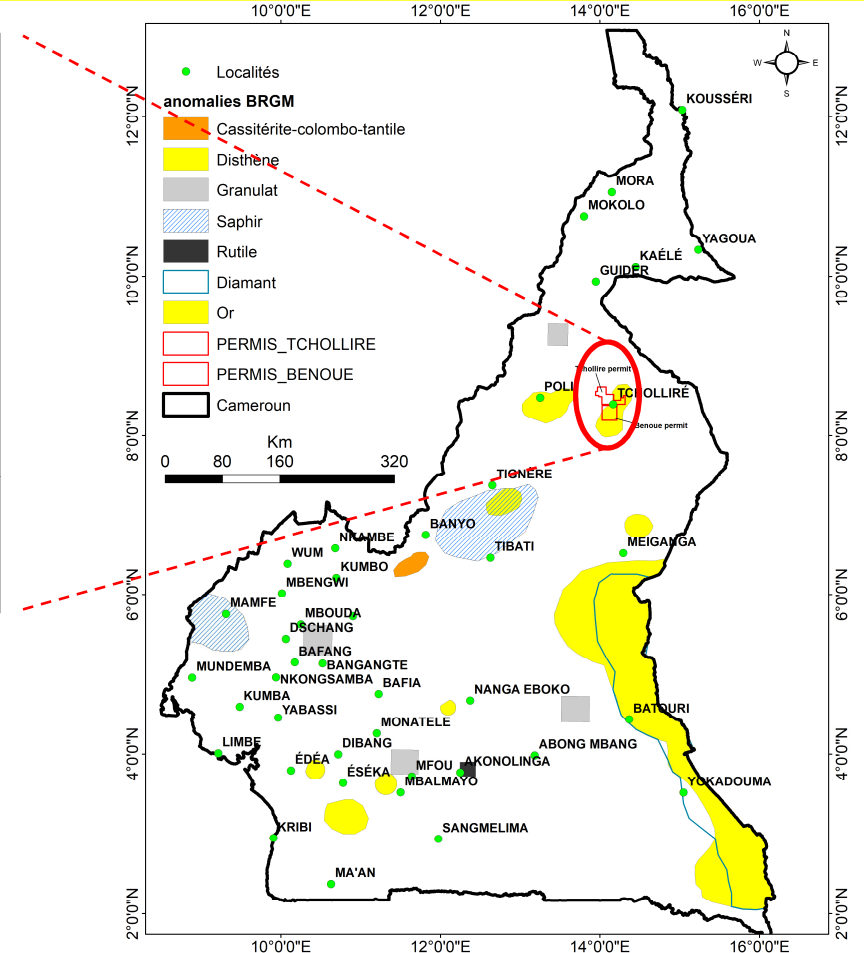


Figure 3: Audit of artisanal mining in Cameroon. Report of the BRGM Expert Mission published in March-April 2011

The Tcholliré and Benoué Concessions

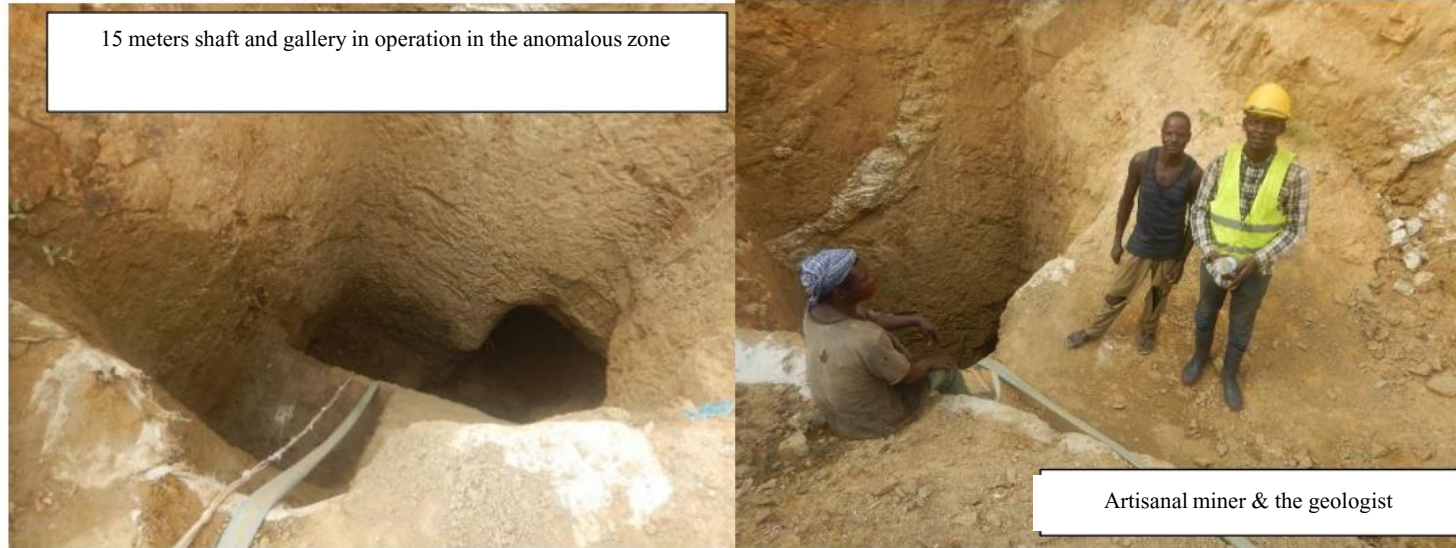


Figure 5: Artisanal mining works on the Tcholliré claim. *Source: "Rapport de prospection géologique de Tcholliré" (published in 2021).*



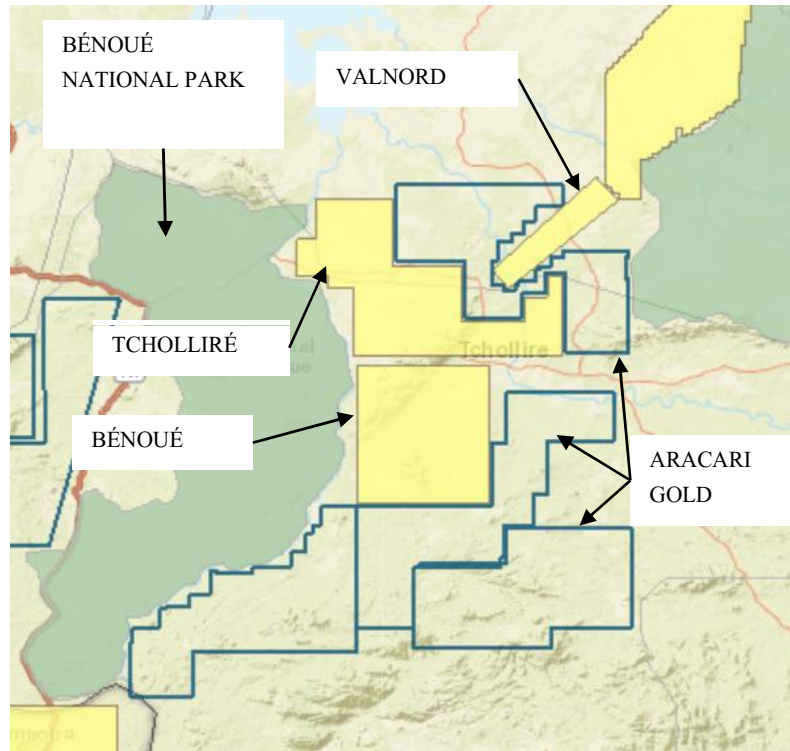
ARTISANAL MINING ACTIVITIES ARE CURRENTLY UNDERTAKEN ON THE CLAIMS. THE SITE IS, APPROXIMATELY, A WHOPPING 60 KM².



THE MINING ACTIVITIES ARE BEING UNDERTAKEN CLOSE TO THE RADIOMETRIC ANOMALIES OF LARKI AND FIMBE, IN THE NATIONAL PARK OF BÉNOUÉ.

The Tcholliré and Bénoué Concessions

Tcholliré and Bénoué are surrounded by multiple claim holders



VALNORD IS OWNED BY **ALTUS STRATEGIES**. THE COMPANY, ALONG WITH ITS PARTNER **LA MANCHA GROUP**, PLANS TO INVEST 1.5 MILLIONS DOLLARS ON THEIR PROJECT (DRILLING ACTIVITIES ARE PLANNED IN 2022).



LA MANCHA GROUP IS ONE OF THE LARGEST MINING DEVELOPER IN AFRICA AND OWNS 19% OF ENDEAVOR MINING FURTHER PROVING THE INCREDIBLE POTENTIAL OF THE TCHOLLIRE-BANYO SHEAR ZONE.



THE ARACARI GOLD CLAIMS ARE OWNED BY **AURUM EXPLORATION**, AN ENGLISH MINERAL EXPLORATION COMPANY. THEY HAVE BEGUN EXPLORATION FIELDWORK ON THEIR GOLD LICENSES (WHICH TOTALS 2,000 sqkm).

Figure 5: The claims surrounding Tcholliré and Bénoué. *Source: Cameroon Mining Cadastre Map Portal (available here: <https://portals.landfolio.com/Cameroon/en/>).*

Geophysical Investigations

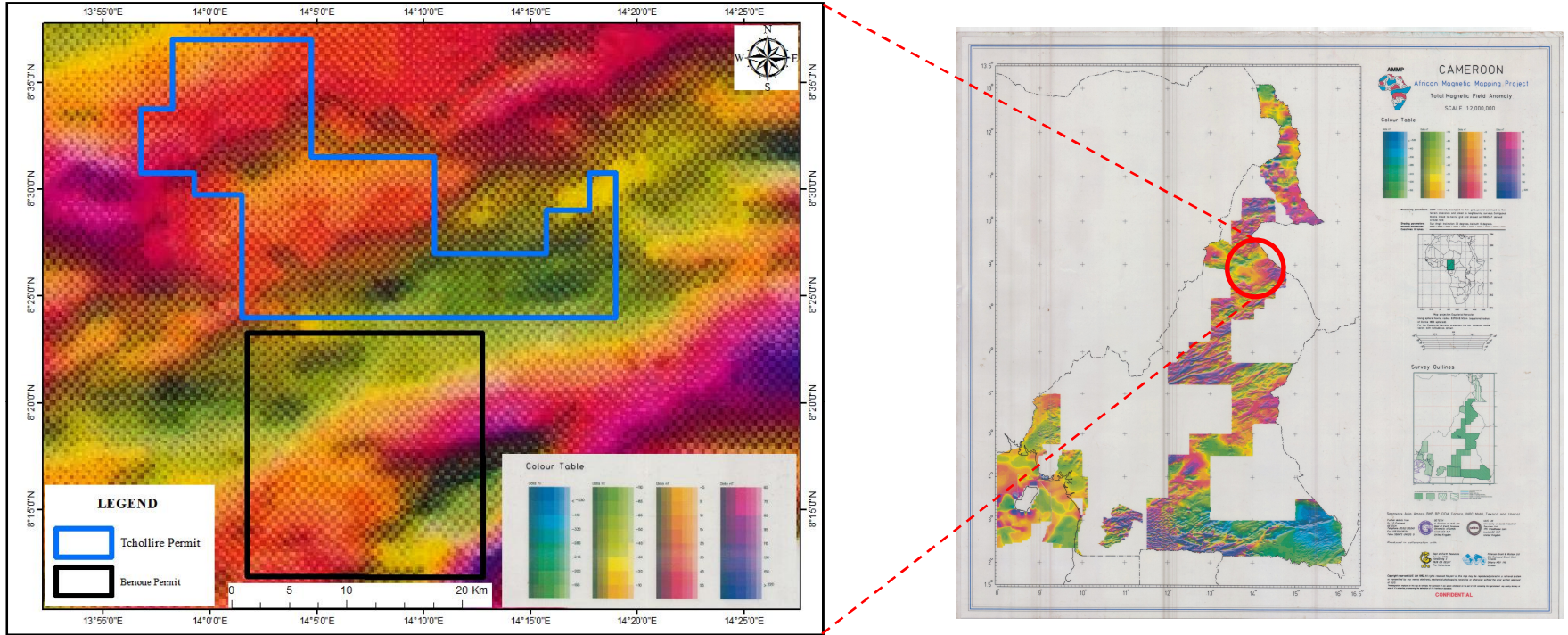


Figure 6: Aeromagnetic survey of Cameroon (Left) and aeromagnetic survey of the Tcholliré and the Bénoué permits (Right)

➡ HELPED TO REVEAL MAGNETIC SIGNATURE OF THE CRYSTALLINE BEDROCK TO UNCOVER SUPERFICIAL DEPOSIT

➡ AEROMAGNETIC SURVEY CONDUCTED IN 1992 BY GETECH THROUGH THE AFRICAN MAGNETIC MAPPING PROGRAM WITH SCALE 1:2,000,000

Geophysical Investigations



GRAVIMETRIC SURVEY LEAD TO THE DEVELOPMENT OF A DETAILED GEOLOGICAL MAP.



GRAVIMETRIC SIGNATURES ARE STRONGLY SIMILAR WITH THE LABOUM GOLD PROJECT, IMMEDIATELY ADJACENT AND TO THE PALA GOLD FIELD IN CHAD.



THE TCHOLLIRE-BANYO SHEAR ZONE AND ASSOCIATED GRANITIC PLUTONS ARE RECOGNIZED WITHIN BOTH CONCESSIONS.

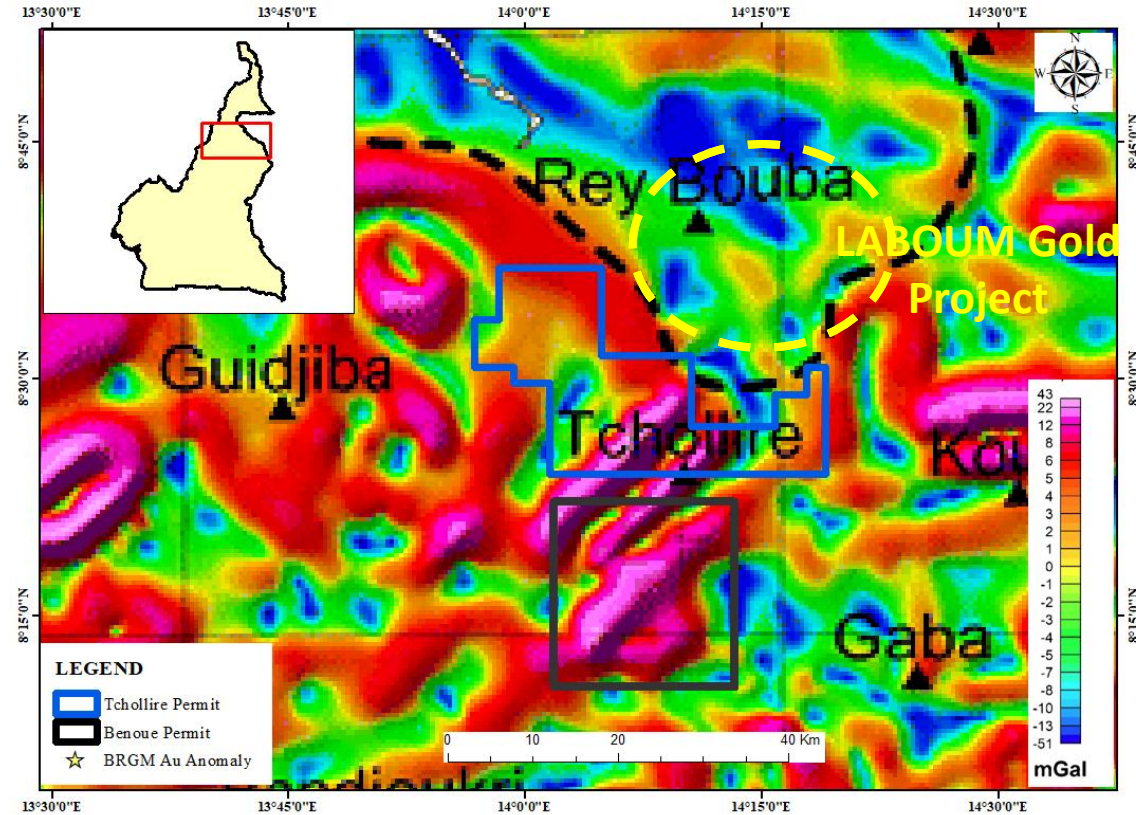


Figure 7: Geophysics map of northern Cameroon (Gravimetric survey) depicting the geophysical anomalies within the Tcholliré and Benoué Permits.

Interpretations of Geophysical Maps



THE MAIN SHEAR ZONE IS THE TCHOLLIRÉ-BANYO SHEAR ZONE WITH A NORTHEAST-SOUTHWEST ORIENTATION. THIS CONSTITUTES A SPLAY OFF THE CENTRAL AFRICAN SHEAR ZONE.



THE TBF CREATED LARGE SCALE FOLDS ASSOCIATED WITH COMPLEX DEFORMATIONAL PATTERNS



WHICH MAY HAVE FORMED MULTISTAGE HYDROTHERMAL FLUID CIRCULATION, THUS PRECIPITATING GOLD ALONG FRACTURES AND MICRO-FRACTURES

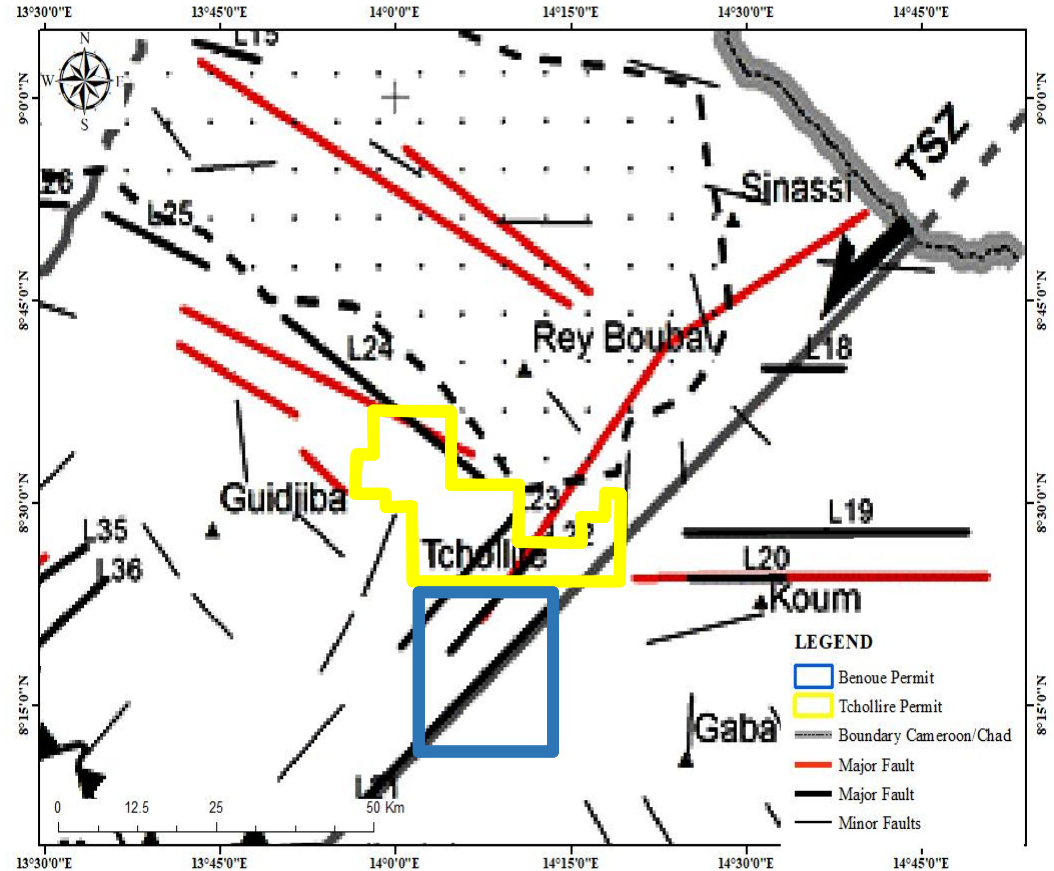
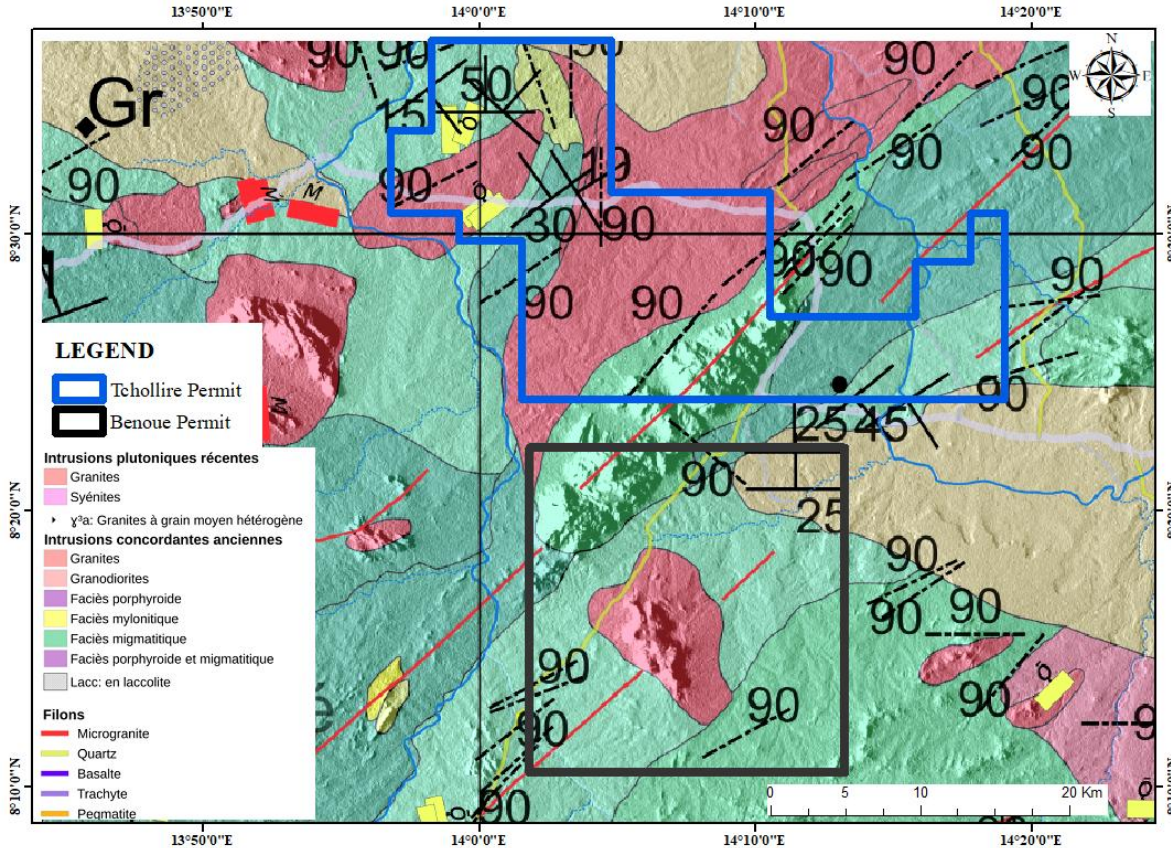


Figure 8: Structural Map of northern Cameroon depicting the location of the Tcholliré and Benoué Permits

Geology and Gold Mineralization



PROVIDES MORE DETAILED LITHOLOGICAL AND STRUCTURAL ELEMENTS.



METAVOLCANICS, GNEISSES OF MAPPED BIRIMIAN/EBUNEAN AGE AND SYNKINEMATIC TO LATE PAN-AFRICAN GRANITOIDS



THE GRANITIC ROCKS ARE OUTSTANDING. LARGELY CROSS CUT BY MAJOR FAULTS ACROSS BOTH PERMITS



BRIGHT RED PRESENTS GRANITIC INTRUSIONS

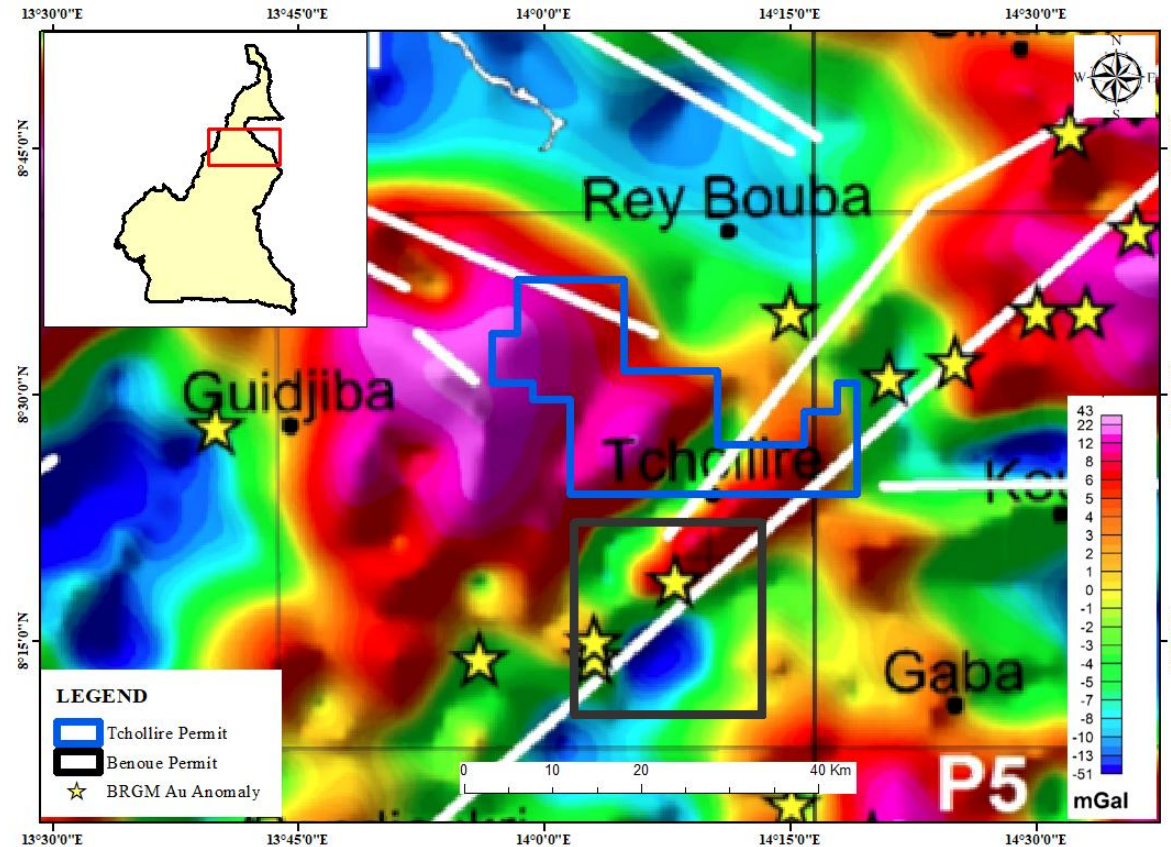


QUARTZ VEINS CAN ALSO BE SEEN THROUGH THE BÉNOUÉ PERMIT (PRESENTED AS THE YELLOW SPLINE)

Figure 9: Geological Map of Garoua East depicting the local geology of Tcholliré and Benoué Permits.

source: BGR, a german society, in collaboration with the state of Cameroon (published in 2018).

Geology and Gold Mineralization







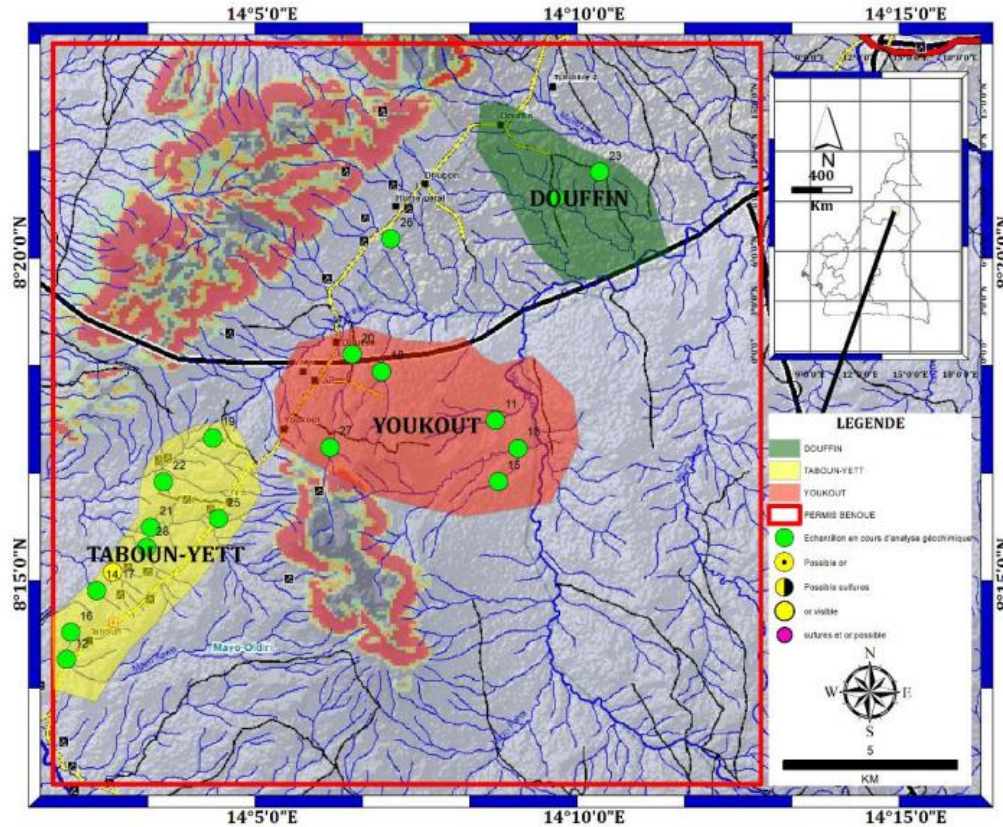
-  BGI GRAVIMETRIC MAP IS SUPERIMPOSED ON GOLD ANOMALIES DEFINED BY BRGM AND OTHER AUTHORS PROVIDING GREATER UNDERSTANDING AND DEFINING PROSPECTS.
-  GOLD MINERALIZATION IS ASSOCIATED TO THE TCHOLLIRÉ-BANYO SHEAR ZONE.
-  THE TCHOLLIRÉ-BANYO SHEAR ZONE CONSTITUTES THE MAJOR MINERALIZATION CORRIDOR IN THE AREA. THIS CORRIDOR CAN BE TRACED FOR 40KM ALONG STRIKE ACROSS BOTH PERMITS WITH A WIDTH OF ABOUT 14 KM.
-  ANOMALIES DEFINED BY THE BRGM AND OTHER AUTHORS

Figure 10: Interpreted Gravimetric Map depicting gold anomalies within the Tcholliré and Benoué Permits.

Source: Jean Marcel A. et al., (2017) after BGI (*Bureau Gravimétrique international*).

Bénoué



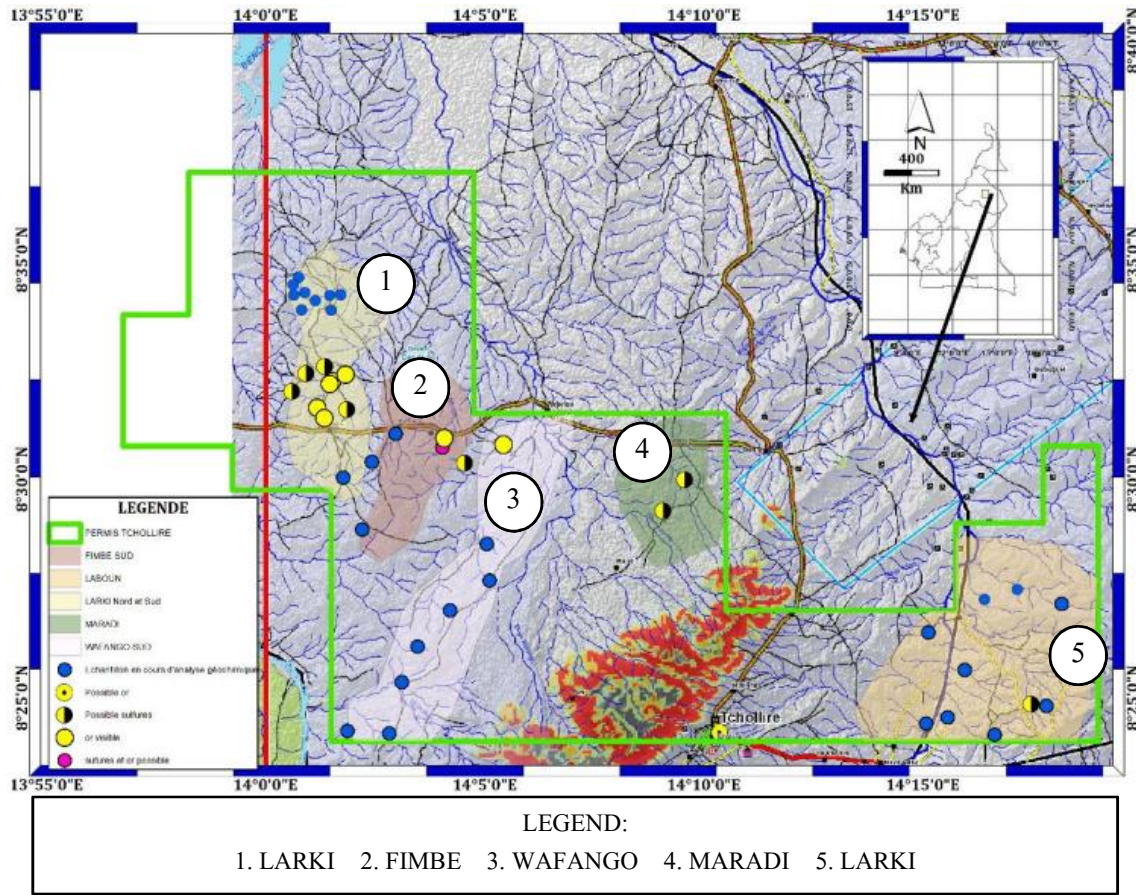
A GEOLOGICAL CAMPAIGN WAS INITIATED IN 2021 AND A REPORT WAS PRODUCED. THE REPORT DEFINED 3 HIGHLY PROSPECTIVE ZONES (DOUFFIN, YOUKOUT AND TABOUN-YETT)



16 STREAM SEDIMENTS WERE TAKEN TO BE ANALYZED. FROM THIS CAMPAIGN, THE SECTOR OF TABOUN-YETT CAUGHT ATTENTION BECAUSE VISIBLE GOLD CAN BE OBSERVED.

Figure 10: Samples of interest taken on the Bénoué permit (in green). Source: "Rapport de prospection géologique de Benoue" (published in 2021).

Tcholliré



A GEOLOGICAL CAMPAIGN WAS INITIATED IN 2021. THE CAMPAIGN WAS USED TO MAKE A STRATEGIC MAPPING ON PREDEFINED ANOMALIES.



THE REPORT DEFINED 4 HIGHLY PROSPECTIVE ZONES (FIMBE, LABOUN, LARKI, MARADI & WAFANGO SUD)



46 STREAM SEDIMENTS WERE TAKEN TO BE ANALYZED. FROM THIS CAMPAIGN, THE SECTORS OF LARKI, FIMBE & MARANDI WERE OF PARTICULAR INTEREST BECAUSE 80% OF THE STREAM SEDIMENTS CONTAINED VISIBLE GOLD.



IN MOST CASES, THE PRESENCE OF GOLD IS LIMITED TO QUARTZ VEINS AND IS MADE OF SOLID QUARTZ WITH MINERAL GOLD AND DISSEMINATED SULPHIDES

Figure 10: Samples of interest taken on the Tcholliré permit (in blue). Source: *‘Rapport de prospection géologique de Tcholliré’* (published in 2021).

More about The Tcholliré and Benoué Concession



AMENDABLE FOR CHEAP EXPLORATION

Located on Savannah area which is not forested; drilling areas are guaranteed



CONSIDERABLE SIMILARITIES WITH SEMAFO'S MINE



- Similar lithology (metavolcanic rocks associated with granites)
- Similar Regional Geological Event (Pan African orogeny)

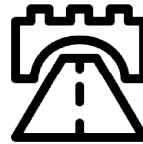


STRONG INFRASTRUCTURE

Good infrastructures such as electricity, water and communication.

Amongst others:

PV megaprojects soon to be started

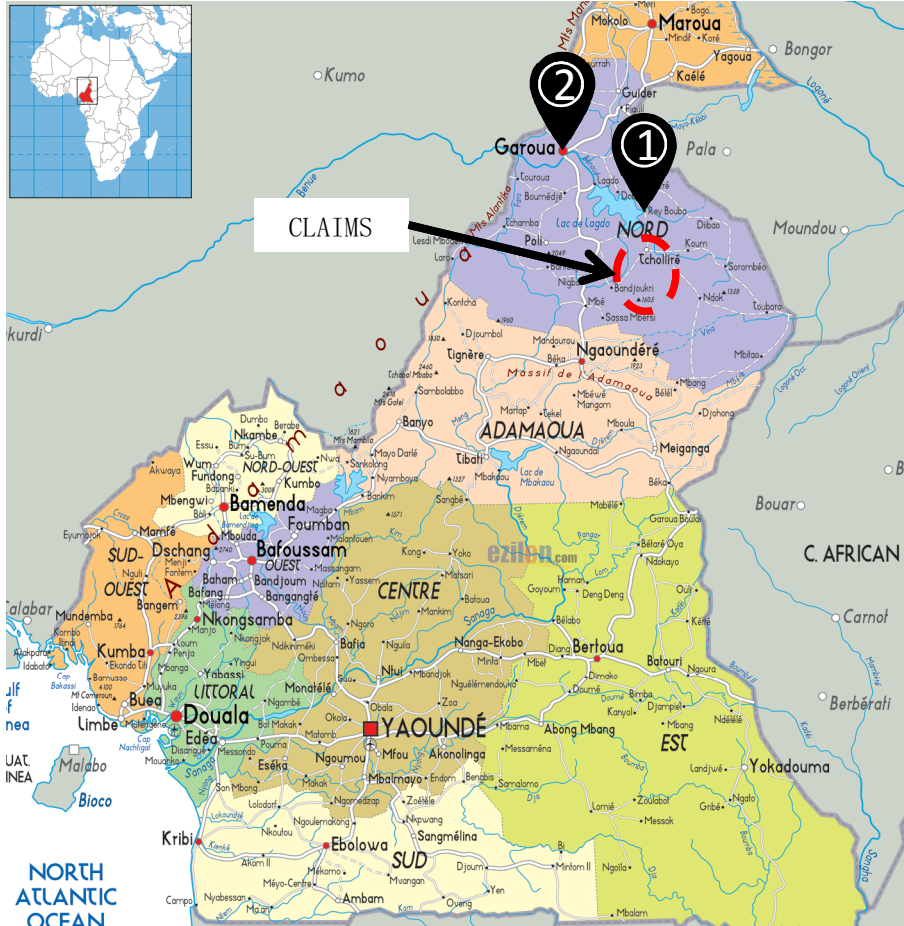


READILY ACCESSIBLE

Concessions accessible through tarred and lateritic roads from Yaounde the capital city



Strategic Infrastructure



1. THE LAGDO HYDROELECTRIC DAM

- Located 60 km away from the claims
- Extension to 80 MW (from 72 MW)

2. THE CITY OF GAROUA

- Capital of the Northern region
- Connected to the South (deep-water ports) through roads and railways
- Host International hotels
- Host very big hospital infrastructures
- Hosts an international Airport
- Located 150 kms from the claims

Social and Environmental considerations



NATIVE COMMUNITIES ARE PRO-MINING

Claims located on the Peul's territory. They helped GEOCAM MINING CAMEROON SA and are completely open to the project



CONCESSIONS FULLY OWNED BY GEOCAM MINING CAMEROON SA

The company possess " Valide exploration licenses obtained from the Cameroonian ministry in charge of mine (Minmidt) "



AN ENVIRONMENTAL IMPACT ASSESSMENT REPORT PREPARED IN ACCORDANCE WITH THE ENVIRONMENTAL IMPACT ASSESSMENT (EIA) ACT

- Description of the human environment
- Contact with the authorities, municipalities and local residents established;
- Assessment of positive and negative environmental impacts of projects;
- Planning of enhancement and mitigation measures;
- Institutional modalities defined for the implementation of the environmental and social management framework;
- Coordination of the EIA procedure with the planning of the mining projects,



ENVIRONMENTAL STUDY MANDATORY

It must include restauration work and a restauration fund must be built during the project.



Future Work and Budget



Work completed and to be completed

In Cameroon, Mining companies **MUST**:

1. DEDICATE A YEARLY AMOUNT ON THEIR CLAIMS
2. CONDUCT SPECIFIC ACTIVITIES ON THEIR CLAIM



COST ESTIMATE for Remote Sensing and Satellite Imagery studies have been requested from VARIOUS GEOLOGICAL MAPPING AND SERVICES COMPANIES ACROSS CANADA AND THE WORLD



GEOCAM MINING CAMEROON S. A. WILL DEDICATE ITS SUMMER 2022 TO CONDUCT MAPPING AND SAMPLING OF SOILS, ON A LARGE SCALE BASED ON RESULTS FROM CONSULTANTS



1. WORK COMPLETED : EARLY RECONNAISSANCE

- Regional evaluation, for identification of a favourable geological Environment (Synthesis of regional geological, aero geophysical and remotel sensed information data, and creation of data base);
- Strategic field mapping and stream sediments sampling on predefined anomalies (prospective zones);
- Stream sediment samples sent to the Lab for geochemical analyses (SUPERLABS ASSAY (PTY) LTD in SOUTH AFRICA).

2. PROPOSED WORK TO BE COMPLETED IN THE NEARLY FUTURE

- EXTENDED RECONNAISSANCE : Intensive reconnaissance including: aero geophysical, detailed mapping, pitting, trenching and scout drilling;
- FIRST STAGE PRELIMINARY EXPLORATION: Geological, geochemical and geophysical methods, pitting, trenching and sinking of wide spaced drill holes;
- SECOND STAGE PRELIMINARY EXPLORATION: Systematic drilling, boreholes designed to intersect ore bodies at least in bed level, mineralogical/chemical characteristics of the ore zone studies.
- THIRD STAGE EXPLORATION: Evaluation of the mineral resources of the selected targets according to international standards: JORC (Australia) or NI 43 101 (Canada).
- FOURTH STAGE EXPLORATION: Banking feasibility study (certification of resource estimated, mining design, impact study, and mining permit

Conclusion



CAMEROON

- Stable jurisdiction with a revamped mining code (2016) favorable to international investors
- Significant untapped resources
- Concessions fully owned by GEOCAM Mining Cameroon SA.



THE BÉNOUÉ AND TCHOLLIRÉ CONCESSIONS

- Previous Airborne High Resolution studies completed
- Stream samples currently being analyzed
- Artisanal miners working on site

MINERALIZATION

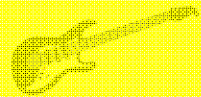
- Major Shear Zone
- Large Scale Folds associated with complex deformation patterns
- Gold recovered from stream channels and weathered granitic soils in less than a meter from the surface



INFRASTRUCTURE AND ENVIRONMENTAL CONCERNS

- Concessions easily accessible in a Savannah area
- Strong infrastructure presence (electricity, etc.)
- Good relationship with contiguous pro-mining communities
- Environmental Study mandatory





THANK YOU
QUESTIONS?

Prepared by:

Alain Takougang
Anas Chazi